



Warehouse for Lease North Airport Industrial Park

2007 S. O Street, Port Angeles





Light Industrial, City of Port Angeles
Near William Fairchild Int'l Airport
10,000 SF warehouse/office
32,600 SF Parking and Laydown
Three 14 ft. x 14 ft. bay doors
480V 3-phase with welding capability.

Rent \$7,500/month (\$0.75/SF)
Plus 12.84% leasehold excise tax \$963.00
Plus City utilities

Working Bay 1 of 2

Fly to Work! Great location near William Fairchild International Airport





Partially Fenced Laydown Area

Working Bay 2





Upper Floor Storage

Working Bay 2



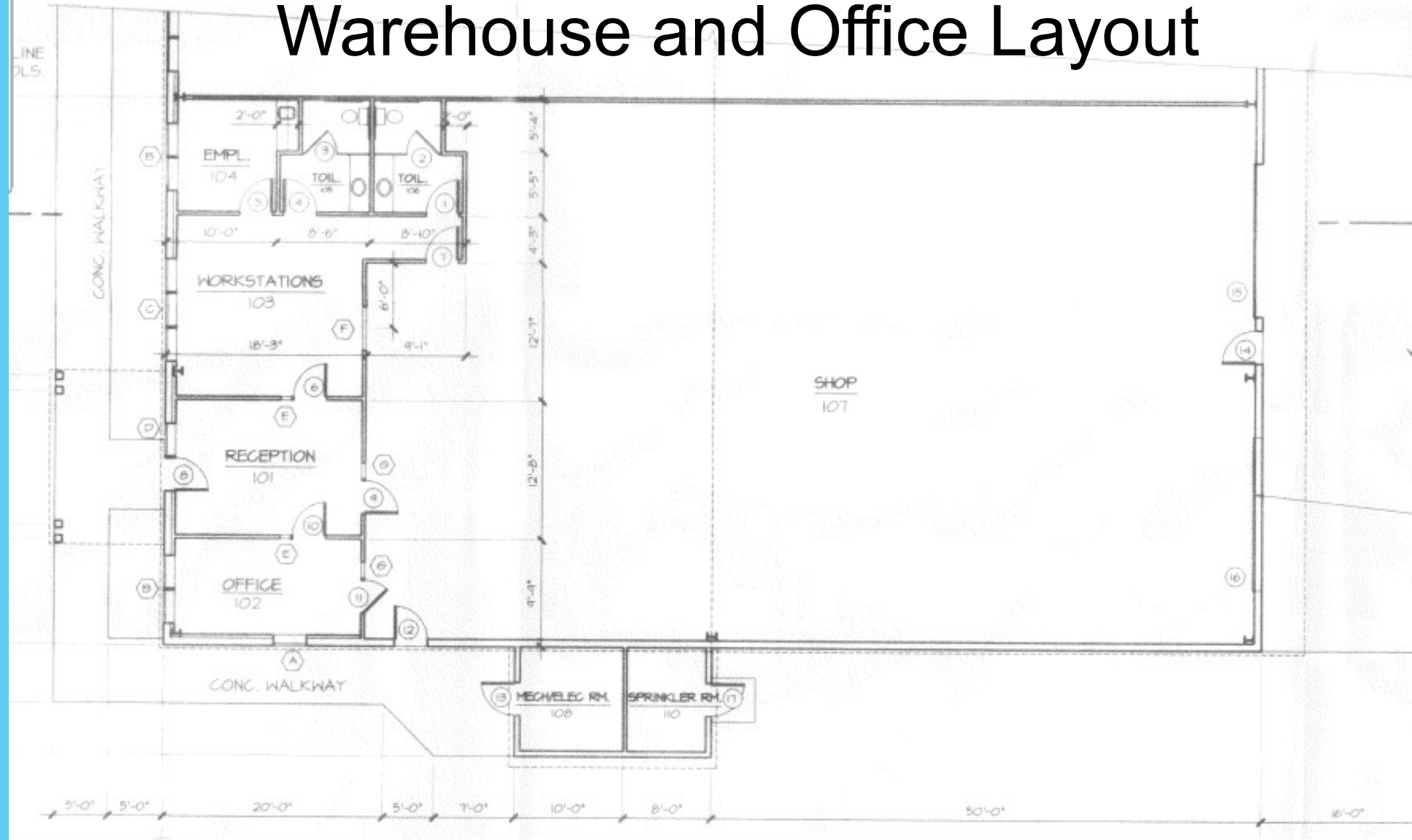
Offices, Breakroom, Shower, Restrooms

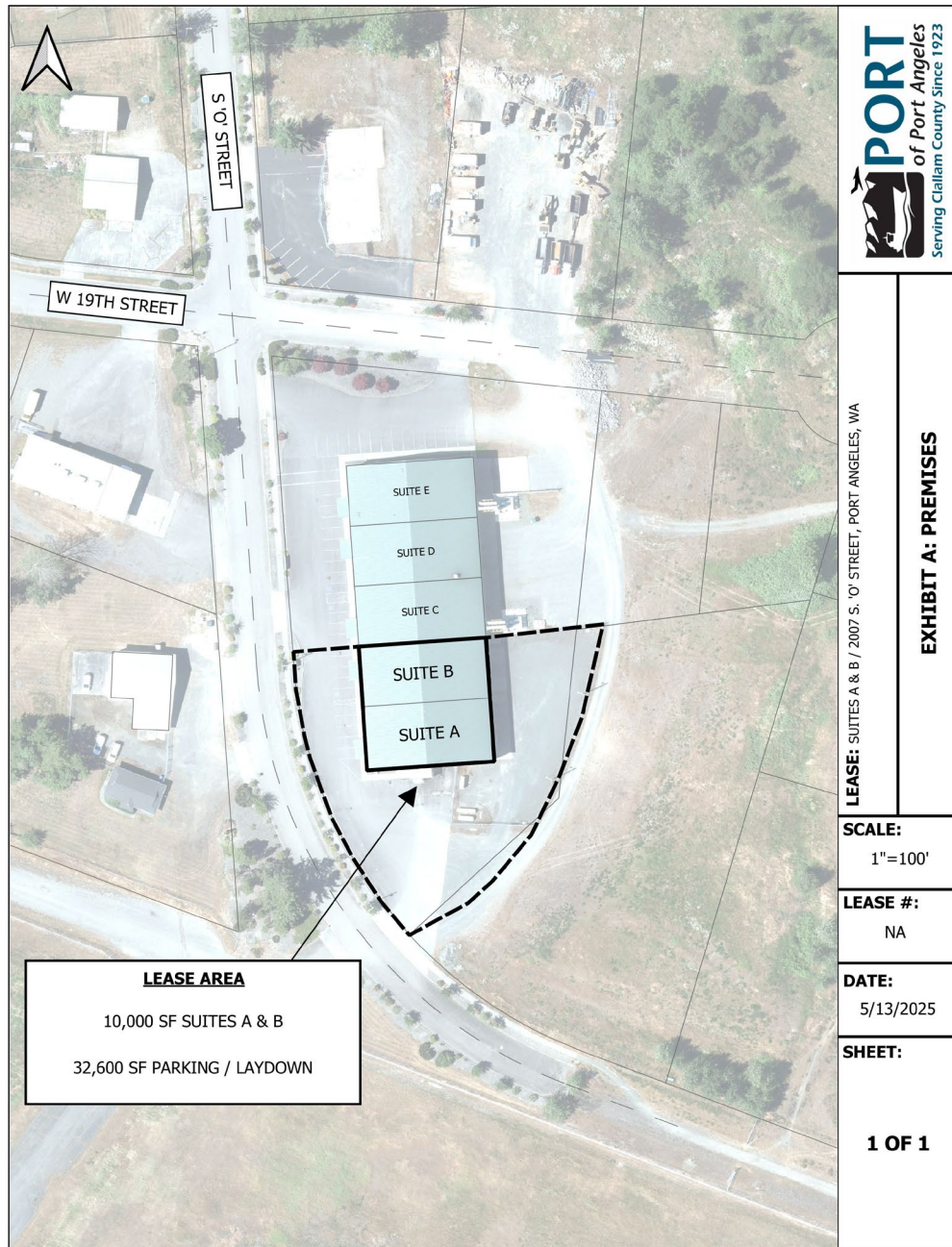


INTERIOR ELEVATIONS

SCALE: 3/8" = 1'-0"

Warehouse and Office Layout





Contact Port of Port Angeles for your tour.

Contact:

Caleb McMahon
Director of Economic Development
Port of Port Angeles
360-417-3366
calebm@portofpa.com