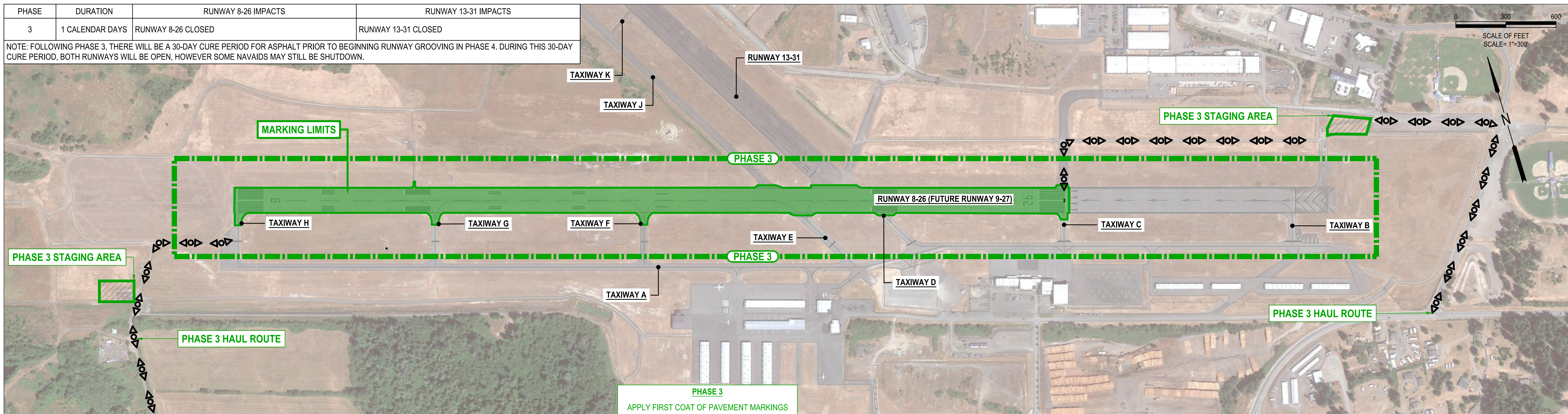


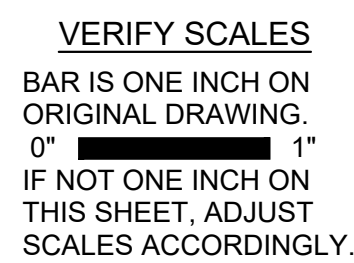
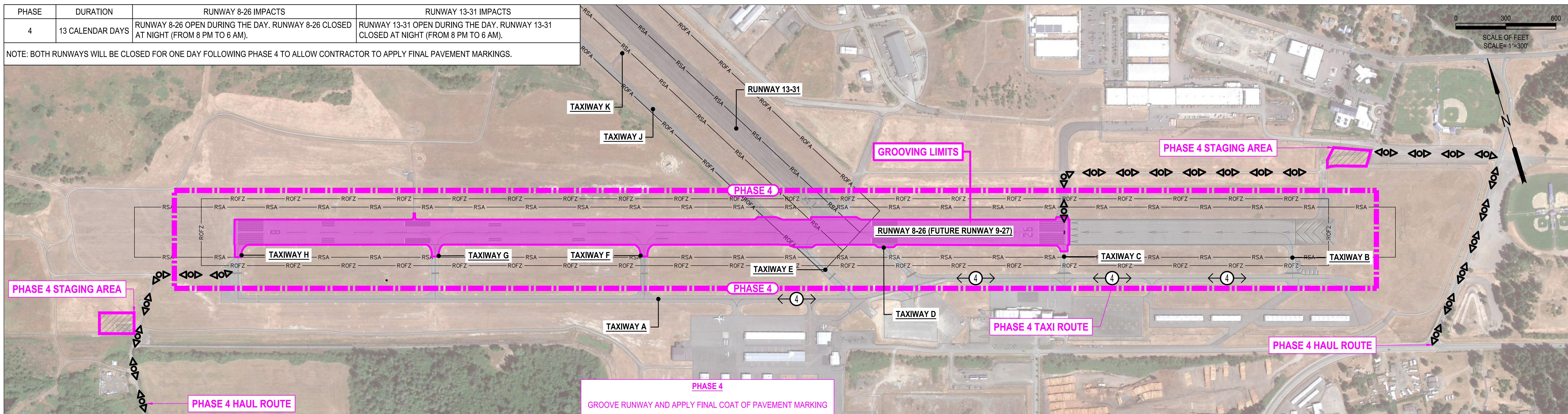
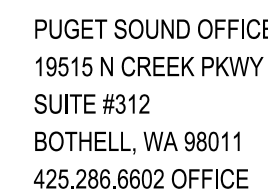




NOTE: FOLLOWING PHASE 3, THERE WILL BE A 30-DAY CURE PERIOD FOR ASPHALT PRIOR TO BEGINNING RUNWAY GROOVING IN PHASE 4. DURING THIS 30-DAY CURE PERIOD, BOTH RUNWAYS WILL BE OPEN, HOWEVER SOME NAVAIDS MAY STILL BE SHUTDOWN.



NOTE: BOTH RUNWAYS WILL BE CLOSED FOR ONE DAY FOLLOWING PHASE 4 TO ALLOW CONTRACTOR TO APPLY FINAL PAVEMENT MARKINGS.

[illegible]

DESIGNED BY:	DMY
DRAWN BY:	DMY
CHECKED BY:	MKJ
SCALE:	AS NOTED

## PHASING OVERVIEW - PHASES 3 & 4

DRAWING NO.	2
SHEET NO.	2 OF 2