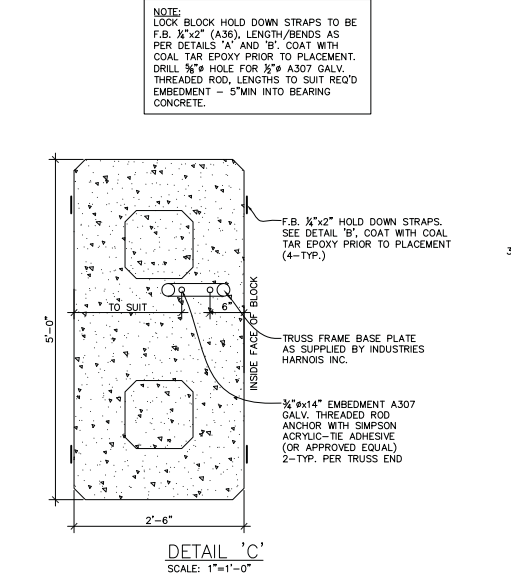
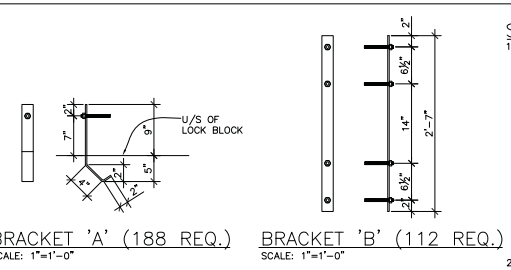
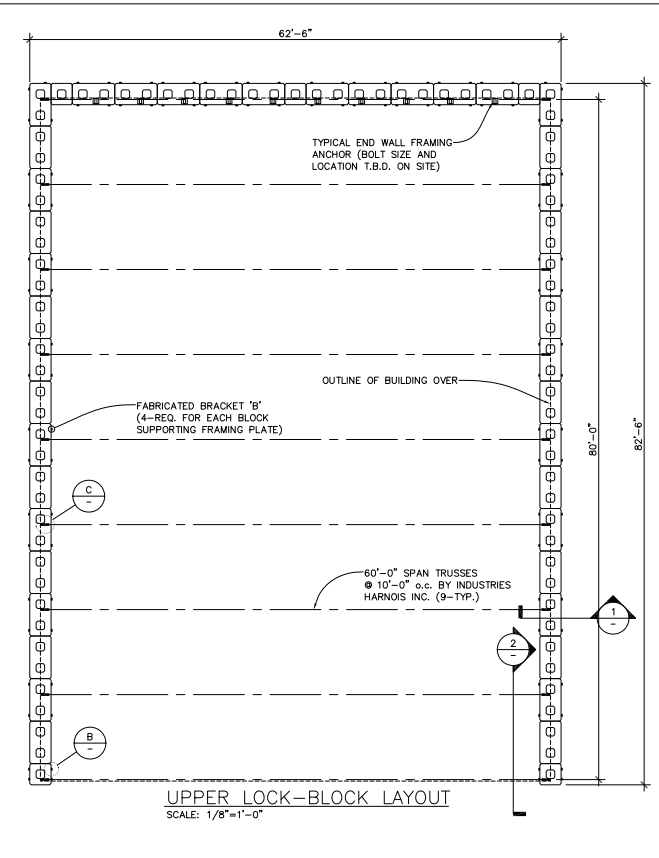


**LOCK-BLOCK REQUIREMENTS**

LOWER ROW:  
43 FULL BLOCKS  
3 HALF BLOCKS

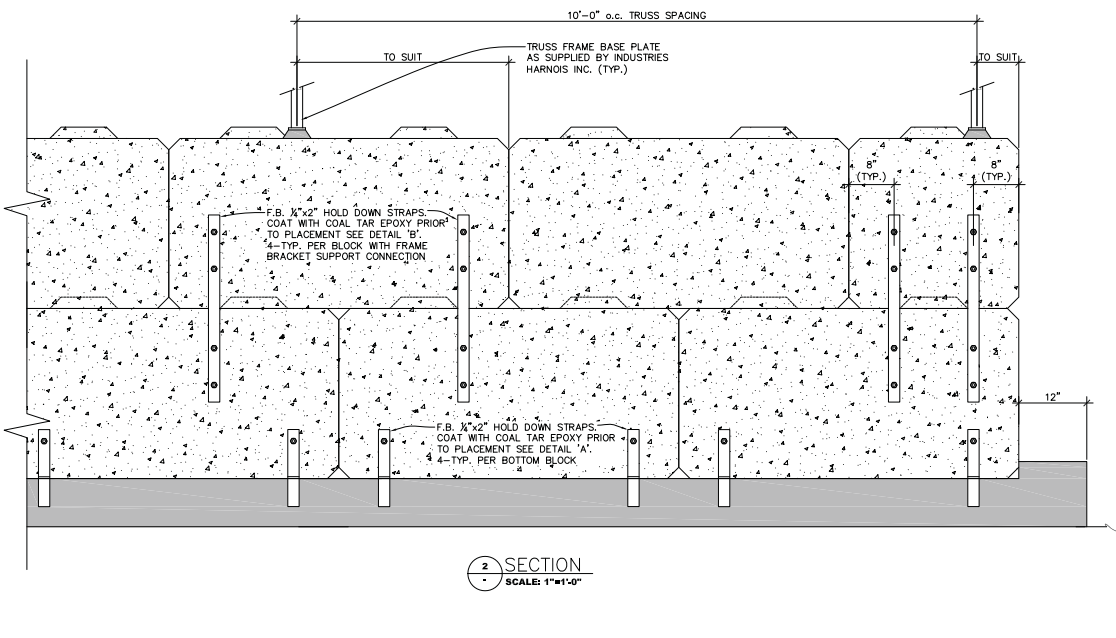
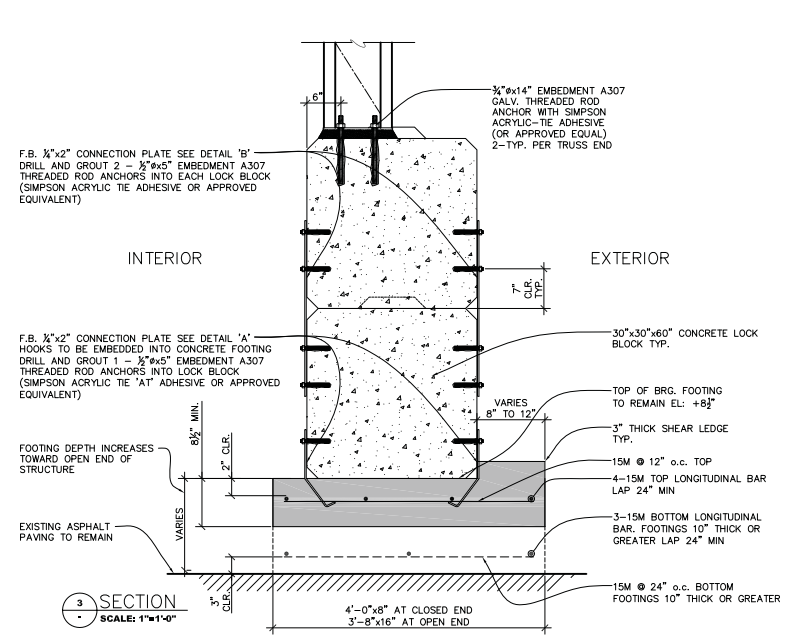
UPPER ROW:  
42 FULL BLOCKS  
5 HALF BLOCKS

TOTAL:  
85 FULL BLOCKS  
(2'-6" x 2'-6" x 5'-0")  
8 HALF BLOCKS  
(2'-6" x 2'-6" x 2'-6")



**STRUCTURAL SPECIFICATIONS:**

1. DESIGN:
- STRUCTURAL DESIGN TO PART 4, B.C. BUILDING CODE, 2012 EDITION.
  - ALTERATIONS OR DEVIATIONS FROM THE SPECIFICATIONS AND/OR ARRANGEMENTS SHOWN ON THE DRAWINGS WILL NOT BE EVALUATED BY HSI-HOME STRUCTURAL INC. UNLESS AUTHORIZED BY THE CLIENT.
  - DESIGN LOADS:
  - ASSUMED SOIL BEARING PRESSURE TO BE NOT LESS THAN 2500 PSF. DUE TO ACTUAL SOIL CONDITIONS IN THE LOCAL AREA THE FOOTING SIZES SHOWN MAY BE REVISED UPON INSPECTION OF THE EXCAVATION.
2. MATERIALS:
- CONCRETE:
- CONCRETE SHALL BE PRODUCED IN ACCORDANCE WITH CAN/CSA A23.1 AND A23.2 TO THE FOLLOWING:
- | CEMENT TYPE   | GU (USE TYPE HS IF SULFATE RESISTANCE IS REQUIRED) | CLASS | STRENGTH (MIN. 28 DAY) | MAX. AGG. AIR ENT. (%) | WATER/CEMENT RATIO | EXP. RATIO |
|---------------|--|-------|------------------------|------------------------|--------------------|------------|
| LEVELING FTG. | 20 MPa   | 3/4"  | 4-7%                   | .53                    | N                  |            |
- ALL ANCHOR BOLTS TO BE ASTM A307 GALVANIZED OR BETTER.
  - ALL STEEL PLATE TO BE CSA G40.21M 250W (36,000 PSI).
  - EPOXY GROUT TO BE SIMPSON ACRYLIC TIE 'AT' OR APPROVED ALTERNATE.
  - ALL STEEL BRACKETS TO BE FINISHED AS PER DRAWING SPECIFICATIONS.
3. WORKMANSHIP:
- INSTALLER TO FIELD CHECK ALL DIMENSIONS PRIOR TO FABRICATION AND INSTALLATION.
  - ALL REINFORCING STEEL WORK TO BE KEPT CLEAN, FREE OF MUD OR OTHER DELETERIOUS MATERIAL AT ALL TIMES.
  - ALL REINFORCING STEEL WORK TO BE ACCURATELY PLACED AND SECURELY TIED PRIOR TO PLACEMENT OF CONCRETE.
  - MINIMUM SPLICE LENGTHS FOR REINFORCING STEEL WORK:  
10M BARS = 16"  
13M BARS = 20"  
15M BARS = 24"
  - UNLESS OTHERWISE SPECIFIED ALL FRAMING & NAILING TO BE DONE IN ACCORDANCE WITH B.C. BUILDING CODE, 2012 EDITION, SECTION 9.23.



FOUNDATION PLAN AND DETAILS

SEAL:

DRAWN BY:	DATE CREATED:	-
DESIGNED BY:	DATE EDITED:	-
CHECKED BY:	SCALE:	AS NOTED

S1.1 | 1