

Port of Port Angeles

Port Angeles, Washington

Commissioner's Resolution No.

22-1248

A RESOLUTION OF THE PORT OF PORT ANGELES COMMISSION REDISTRICTING THE COMMISSIONER DISTRICTS

WHEREAS, RCW 53.16 empowers the Port Commission to redistrict the Commissioner Districts within the Port District at any time it may deem appropriate so long as such redistricting does not take place within 30 days before the closing of filing for an election;

WHEREAS, the Port Commission has determined, as a result of 2020 census data, that the present allocation of voters within districts of the Port Districts is substantially disproportionate; and

WHEREAS, RCW 53.16 requires that each Commissioner District comprise as nearly as possible one-third (1/3) of the total population in the Port District; and

WHEREAS, RCW 53.12.010 states in part "Where a port district with three commissioner positions is coextensive with the boundaries of a county that has a population of less than five hundred thousand and the county has three county legislative authority districts, the port commissioner districts shall be the county legislative authority districts;" and

WHEREAS, a public meeting of the Board of Port Commissioners has been duly called and notice of such public meeting published in accordance with the provision of RCW 53.16 for the purpose of considering redistricting; and

WHEREAS, all three Port Commissioners were in attendance at said public meeting in accordance with the requirements of statute Commission for reestablishing the boundaries of the Commissioner Districts within the Port District so that each would comprise as nearly as possible one-third (1/3) of the population of the Port District; and

WHEREAS, the Port Commission has determined it to be in the best interests of the Port District to reestablish the boundaries of Commissioner Districts in accordance with Exhibit "A" attached hereto.

WHEREAS this Resolution rescinds any and all of the Resolutions dealing with the same subject matter.

NOW, THEREFORE, BE IT RESOLVED BY THE PORT OF PORT ANGELES COMMISSION:


That the Commissioner District boundaries be re-established in accordance with the list of Districts and County precincts therein attached hereto and denominated Exhibit "A" and by this reference incorporated herein as if set forth at length.

ADOPTED this 25th day of JANUARY, 2022.

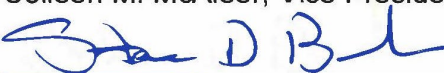
PORT OF PORT ANGELES
BOARD OF COMMISSIONERS



Connie L. Beauvais, President



Colleen M. McAleer, Vice President



Steven Burke, Secretary

Clallam County Redistricting 2021

Redistricting Preliminary Selection
From 29 November, 2021
For Hearing 13 December, 2021
Revised Map of District 1 and 2 Boundary

Districting Masters
Don Corson
Gene H. Unger

Preliminary Selection

November 29, 2021

After a thorough review of several alternatives and consideration of significant public input, the Redistricting Commission has selected the alternative discussed below as preferred. Additional public comment regarding this alternative will be taken through **December 13**. If the Redistricting Commission continues to believe this alternative to be the best one in light of all Clallam County Charter requirements, the Redistricting Commission will forward this recommendation to the Clallam County Commissioners for adoption.

Preliminary Selection

Please see attached maps and precinct tables for orientation.

Carlsborg, Lost Mountain and Riverside precincts would be moved from Commissioner District 1 to Commissioner District 2. Port Angeles precinct 106 would be moved from Commissioner District 2 to Commissioner District 3.

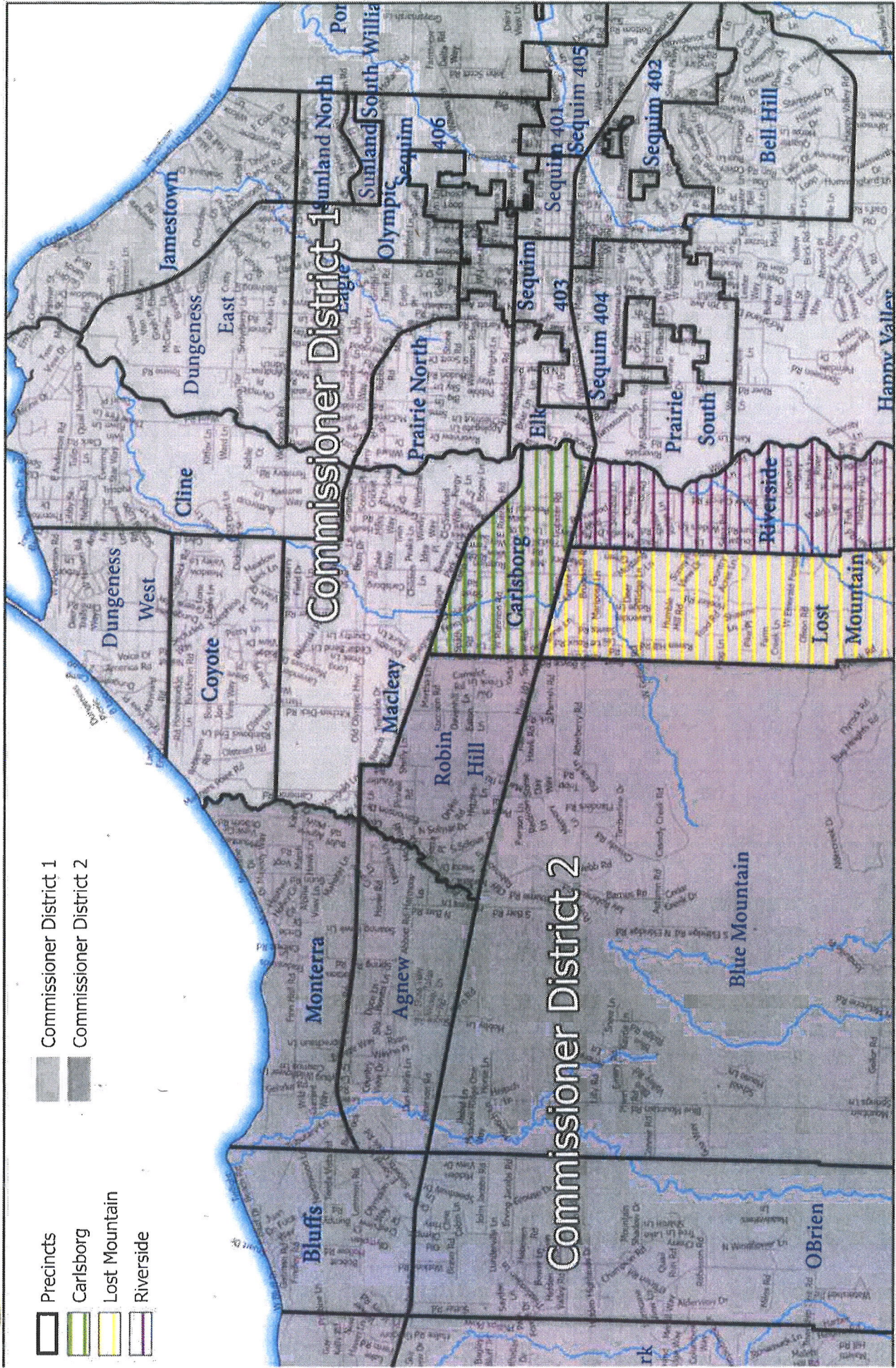
Selection Rationale

Commissioner District boundaries are required to be reviewed after every ten-year federal census. Boundaries are to hold for ten years. The Clallam County Charter identifies in Section 7.40 the criteria for review and modifications if needed. These criteria are: each Commissioner District must be within 5% of each other in population; the boundaries are to be generally north-south; precincts should be continuous; and precincts should be intact. Of these, the Charter indicates a priority be given to population equity.





Preliminary District Commissioner boundary changes would comply with Charter requirements and especially the below 5% population difference between districts. (See attached Table) The proposed district populations would range between 25,180 to 26,099 and the percentage difference between districts would range between .86% and 3.65%.



Commissioner Districts 1 & 2



 Commissioner District 1
 Commissioner District 2

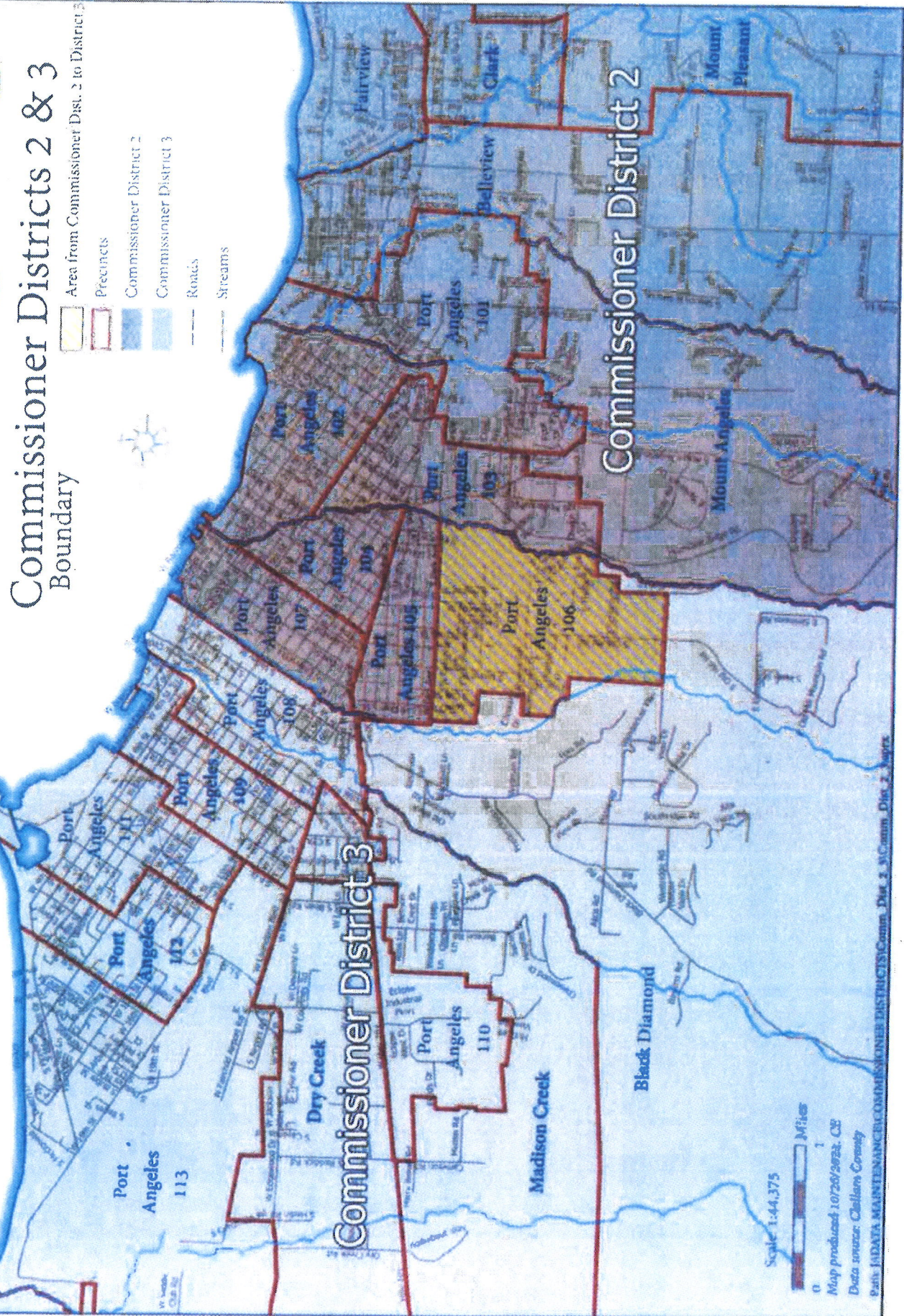
 Precincts
 Carlsborg
 Lost Mountain
 Riverside





Commissioner Districts 2 & 3 Boundary

- Area from Commissioner Dist. 2 to District 3
- Precincts
- Commissioner District 2
- Commissioner District 3
- Roads
- Streams



Scale 1:44,375



Map produced 10/26/2022, CE
Data source: Chalfont, County