



# OPEN HOUSE

## Lincoln Park Master Plan

**Wednesday, October 10, 2012**



**PORT of PORT ANGELES**  
WASHINGTON STATE

# AGENDA

1. Previous planning process
2. Final Master Plan design
3. Vegetation management zones
4. Existing tree evaluation
5. Vegetation management options
6. Phasing and funding
7. Public comments

# OPEN HOUSE #1 – VISIONING



# OPEN HOUSE #1 – MEETING SUMMARY

***Out of a total of 63 comments from the meeting as well as a few comments following the meeting: 31 were in favor of tree removal, 15 were opposed and 17 were either indifferent or had other comments regarding how the meeting was run.***

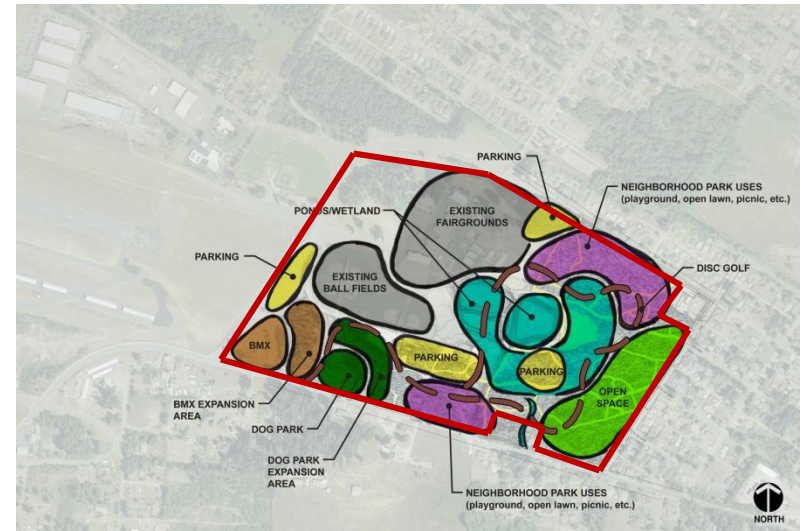
- Trails should be ADA accessible, multi-use, loop trails, connectivity to other trails/paths in the surrounding areas
- Variety of active and passive recreational opportunities
- New and improved amenities such as parking, lighting, benches, etc.
- Preserve existing uses: Buildings, BMX track, baseball/softball fields, dog park and wetlands
- Improving the airport landing space will help the economy and protect the loss of outside business and jobs
- The park is currently dark and feels unsafe – not user friendly
- Concern about tree removal and increasing wind and noise disturbances, impacts to neighbors
- Concern about overall costs as well as maintenance costs
- Concern about past procedures/promises made by the city – in the past trees/vegetation were removed but never replanted as promised



## CONCEPT (1) | botanical gardens



## CONCEPT (2) | open space



## CONCEPT (3) | technical active use



## CONCEPT (4) | educational use



# OPEN HOUSE #2 – MEETING SUMMARY

## Commission Meeting Results

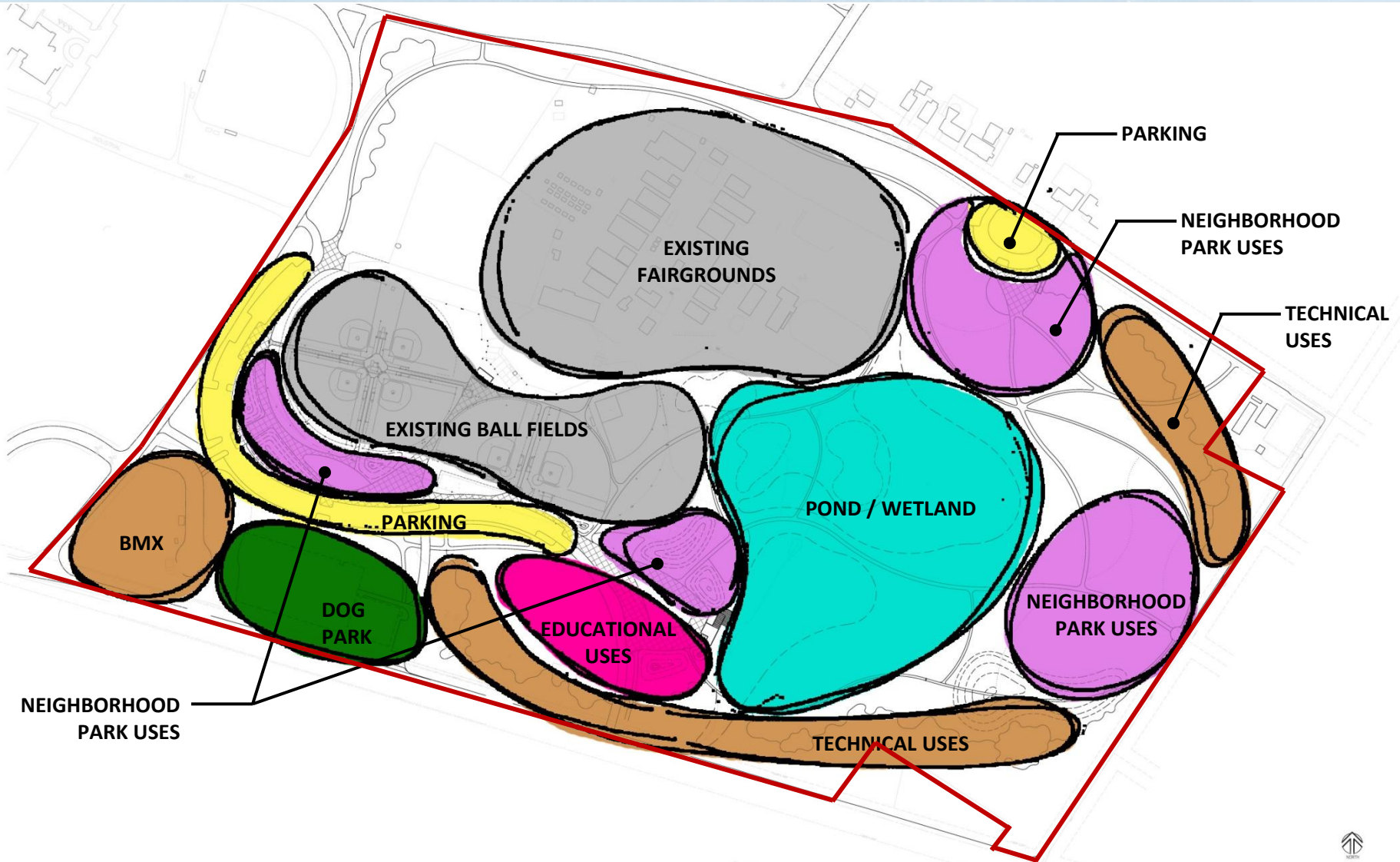
Neighborhood Park	3.67
Ponds/Wetland	3.57
Open Space	3.24
Educational Use	2.90
Outdoor Classroom	2.81
Technical Active Use	2.76
Dog Park	2.57
Botanical Garden	2.48

## Web Survey Results

Ponds/Wetland	3.80
Neighborhood Park	3.57
Technical Active Use	3.38
Educational Use	3.11
Open Space	3.05
Outdoor Classroom	2.97
Dog Park	2.95
Botanical Garden	2.78



# PRELIMINARY DESIGN





# PRELIMINARY DESIGN





# OPEN HOUSE #3 – MEETING SUMMARY

***Out of a total of 26 comments from the meeting: 2 specifically mentioned wanting to keep all the trees on the site and 8 specifically listed a preference for a low-forest canopy/selective tree removal, including those who qualified their preference for only after development has been funded. 8 people specifically mentioned their concern about maintenance/construction costs.***

- Accommodate potential fairground expansion and parking area; maintain access for deliveries, concessions and staging areas
- Keep current clubhouse and small cabins
- Improve wayfinding, add plant identification signage
- Keep water/pond areas small; avoid cattails and other non-native habitat
- Consider bike connection diagonally across site, separated bike path along Lauridsen and bike access from F St.
- Concern about the park design being too urban
- Consider how security/policing of the park will be maintained
- Concern with increasing traffic, it is already heavy enough on W. 16<sup>th</sup> St., E St. & Lauridsen Blvd.
- Keep tall trees

# FINAL MASTER PLAN DESIGN





# FINAL MASTER PLAN DESIGN





# ACTIVITIES & LANDSCAPE PROTOTYPES



Wetland & Pond



Education



Shelter



Gathering



Public Art



# ACTIVITIES & LANDSCAPE PROTOTYPES



Play



Disc Golf



Climb



Dog Park



Technical Trail

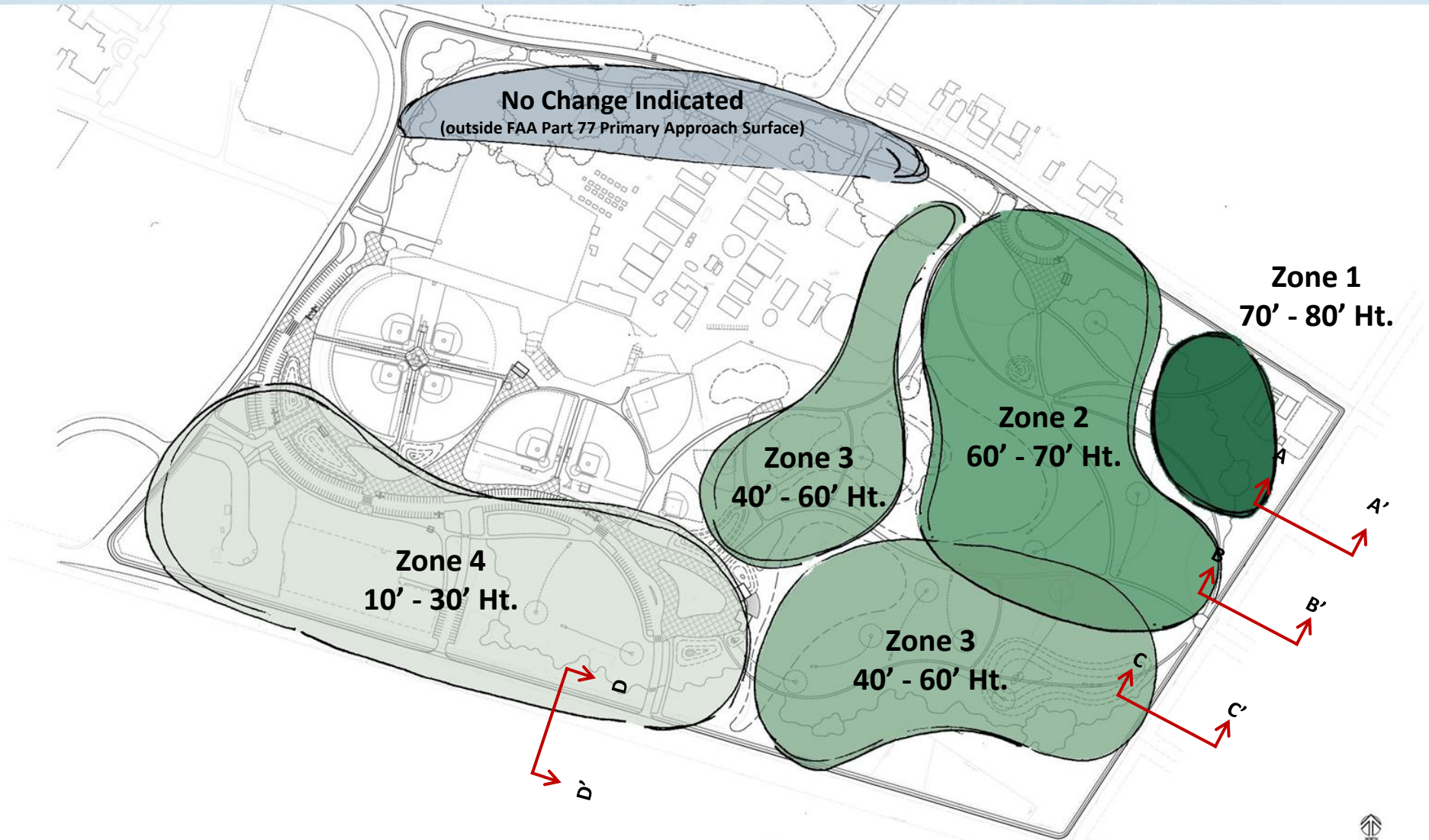


Trail



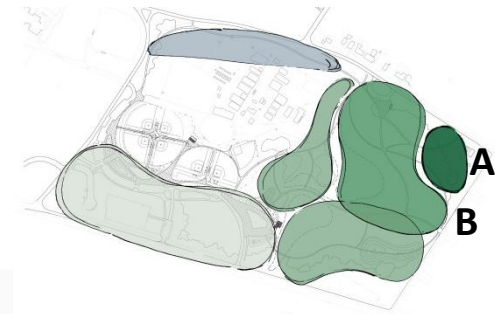
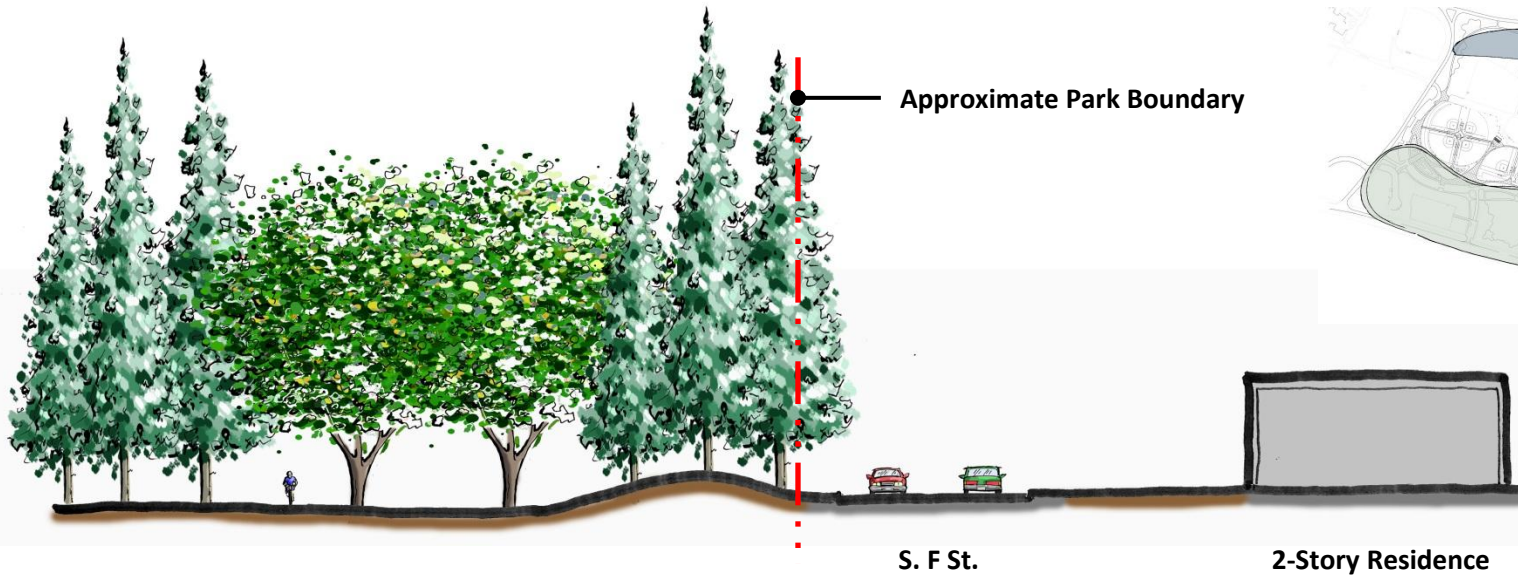


# VEGETATION MANAGEMENT ZONES

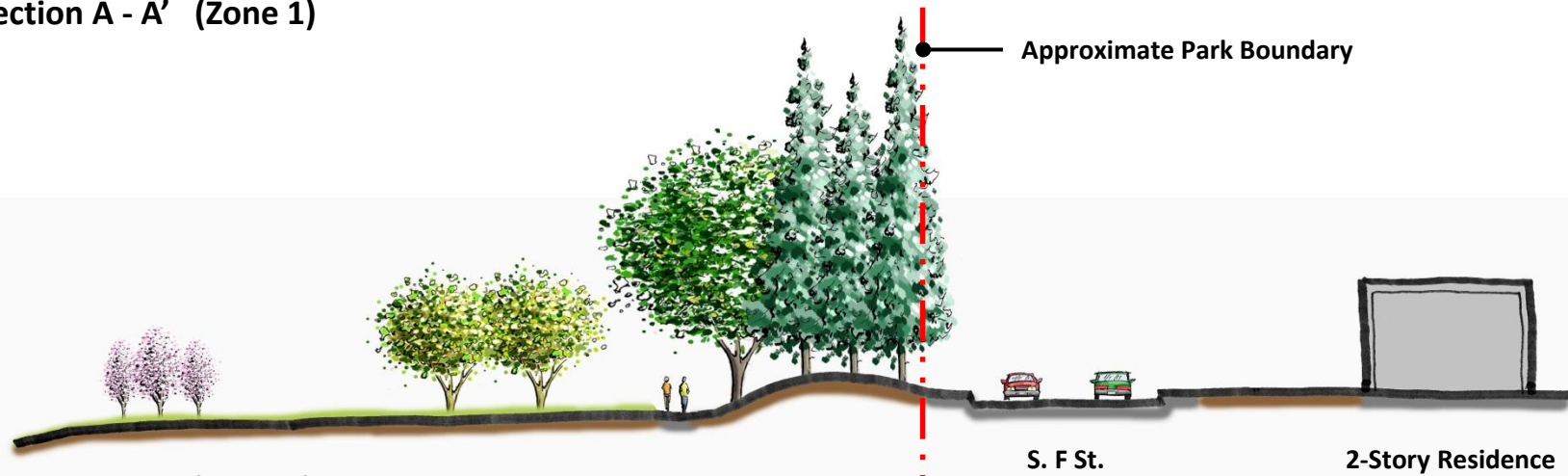




# VEGETATION MANAGEMENT ZONES

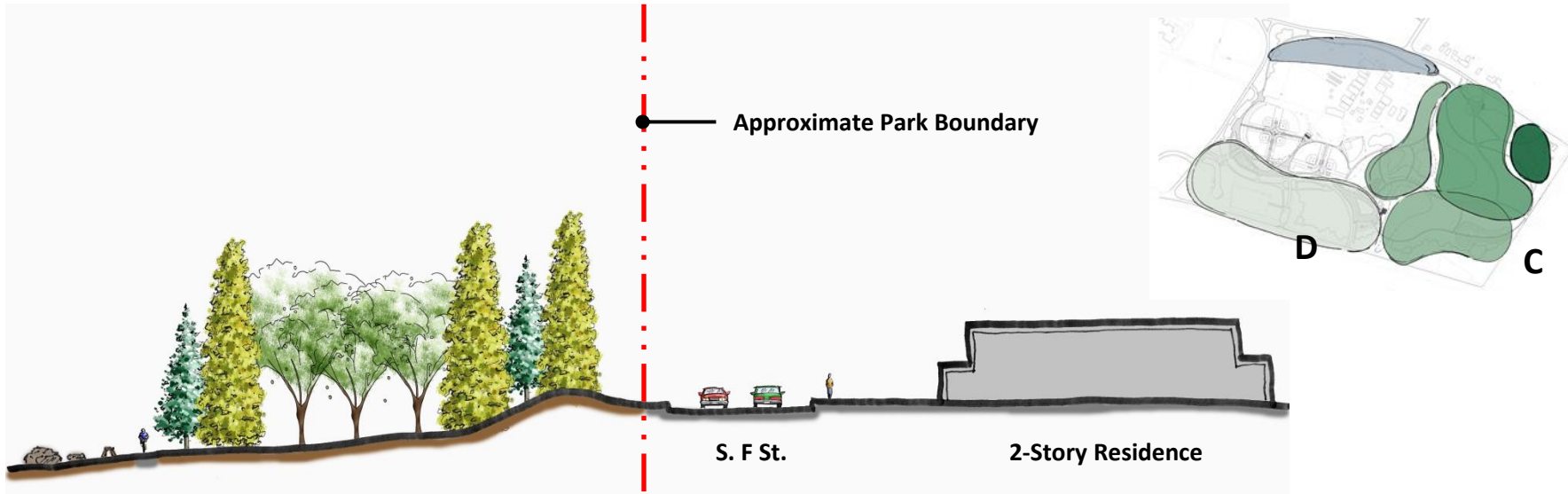


Section A - A' (Zone 1)



Section B - B' (Zone 2)

# VEGETATION MANAGEMENT ZONES



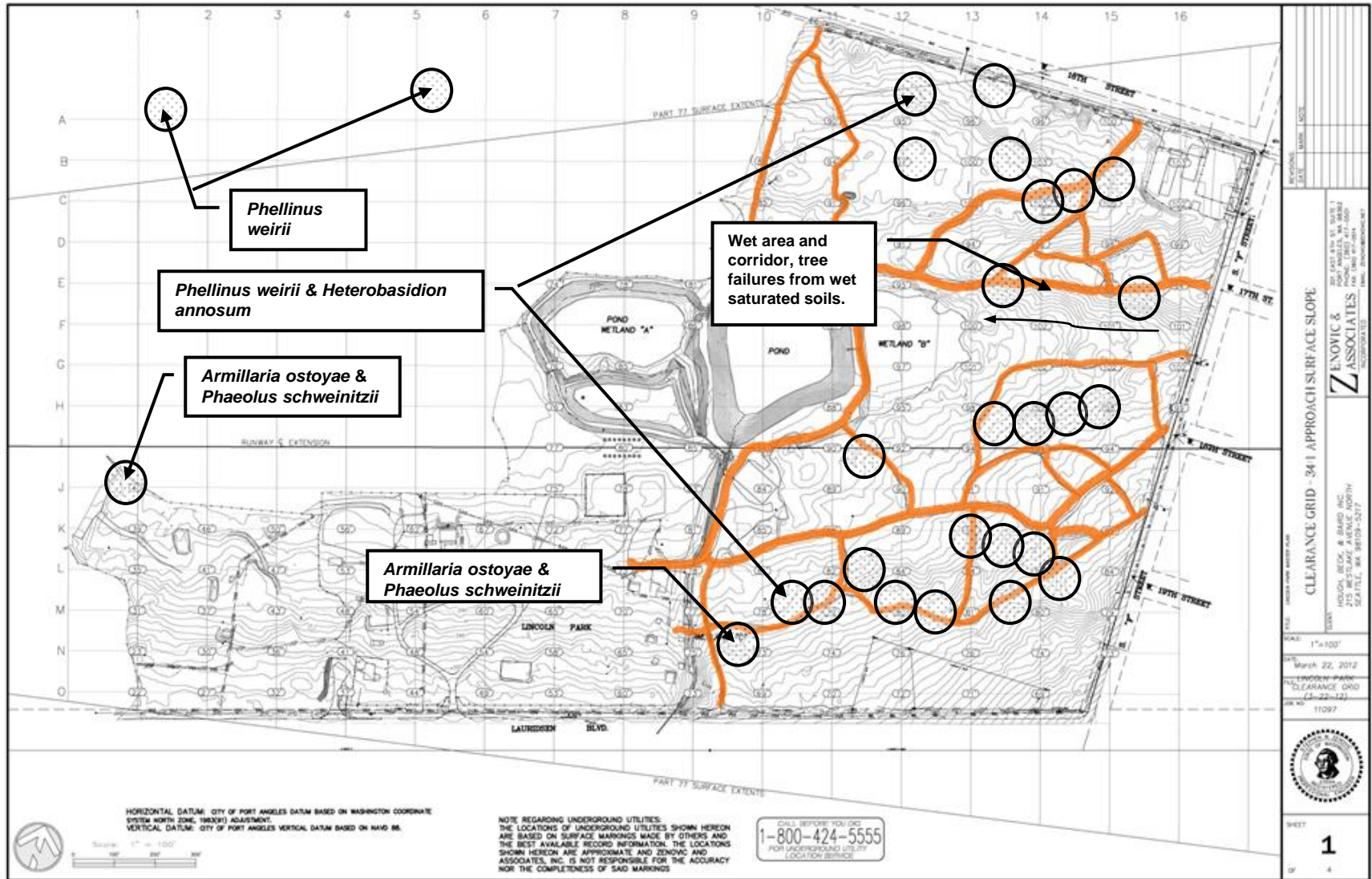
Section C - C' (Zone 3)



Section D - D' (Zone 4)



# EXISTING TREE EVALUATION





# VEGETATION MANAGEMENT OPTIONS

## Do Nothing Option (tree obstructions remain)

- Tree obstructions remain
- Tree removal limited to only those needed for proposed park improvements
- No long term vegetation management needed
- Continued reduction of usable airfield limiting flights into and out of the airport (including emergency services)
- No FAA funding available

# VEGETATION MANAGEMENT OPTIONS

## Remove & Replace Option (remove all potential tree obstructions)

- Remove all current AND future tree obstructions
- Revegetate with a low-canopy forest
- Maintains current use of airfield for flights into and out of the airport
- Limited long-term vegetation management needed
- Revegetation eligible for FAA funding

# VEGETATION MANAGEMENT OPTIONS

## Remove As Needed Option (tree removal as needed only)

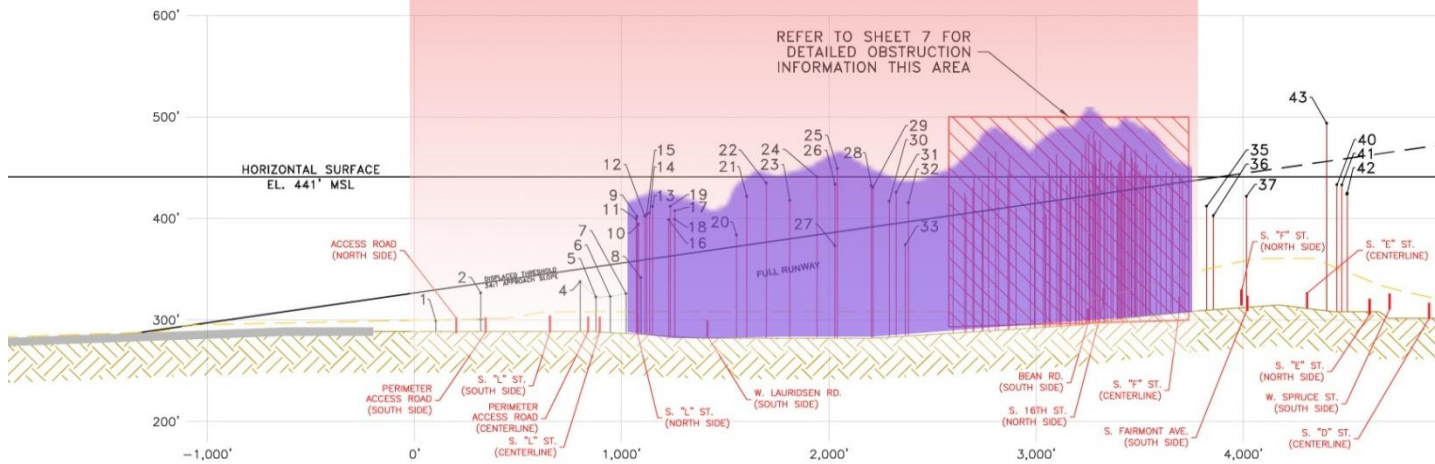
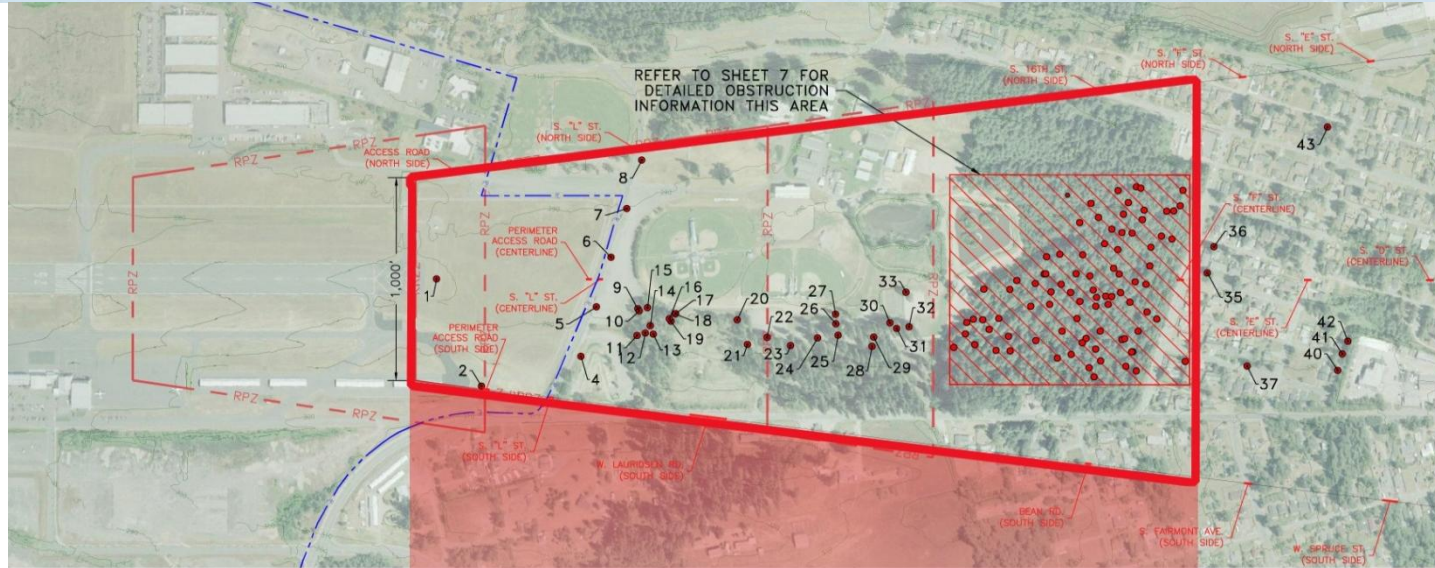
- Tree removal limited to only trees currently at or near obstruction limits
- Revegetate with a low-canopy forest OR a native forest environment
- Long-term vegetation management needed (continued obstruction removal on some regular interval)
- Maintains current use of airfield for flights into and out of the airport
- Continued disturbance over time; public education program/noticing needed
- Long-term health of trees remaining
- Initial revegetation eligible for FAA funding; long-term removal and revegetation costs by city



# VEGETATION MANAGEMENT OPTIONS

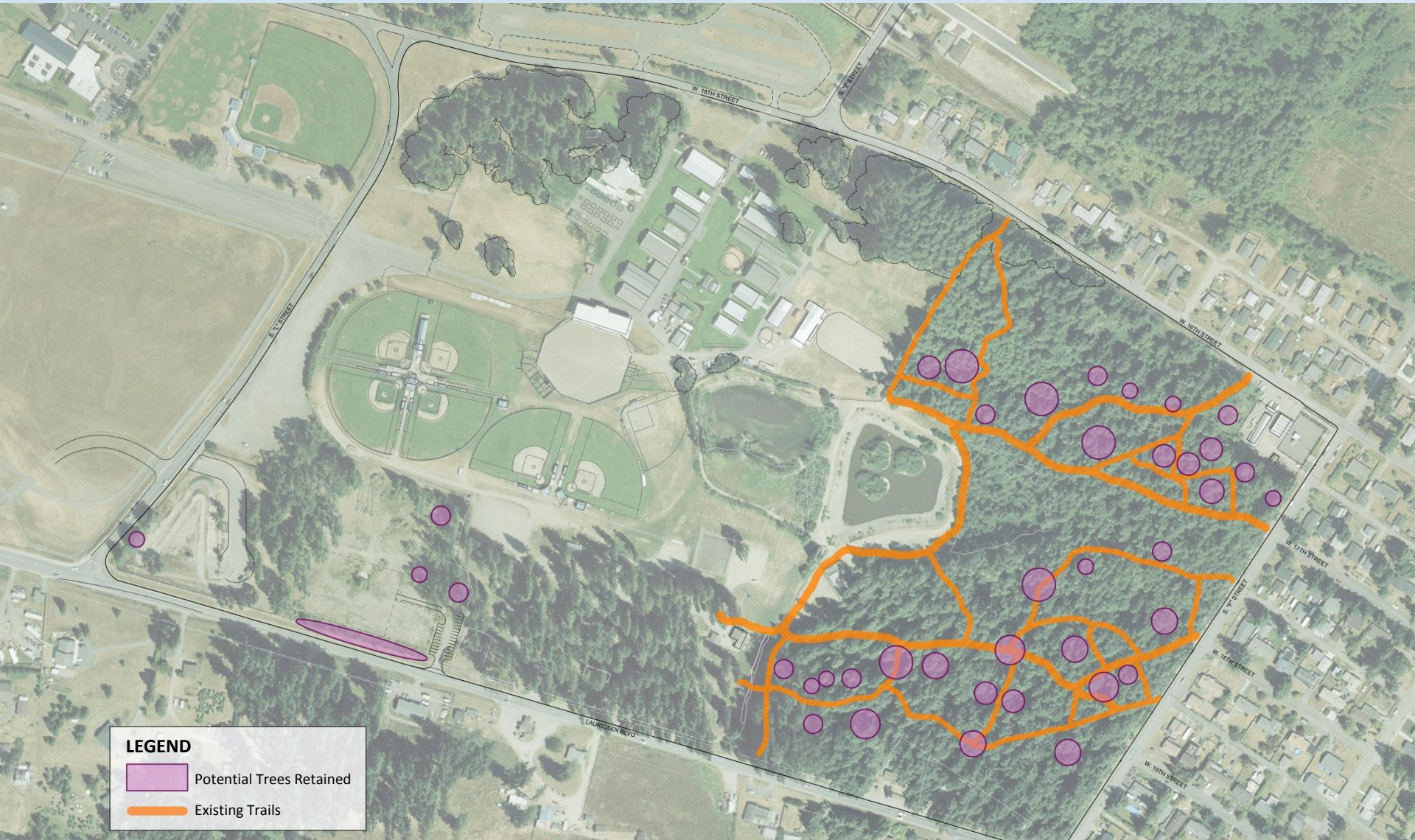
Do Nothing Option	Remove As Needed Option	Remove & Replace Option
<ul style="list-style-type: none"> <li>• Tree obstructions remain</li> <li>• Tree removal limited to only those needed for proposed park improvements</li> <li>• No long term vegetation management needed</li> <li>• Continued reduction of usable airfield limiting flights into and out of the airport (including emergency services)</li> <li>• No FAA funding available</li> </ul> <p><b>LEAST TREE DISTURBANCE</b></p>	<ul style="list-style-type: none"> <li>• Remove only tree currently at or near obstruction limits</li> <li>• Revegetate with a low-canopy forest OR a native forest environment</li> <li>• Long-term vegetation management needed (continued obstruction removal on some regular interval)</li> <li>• Maintains current use of airfield for flights into and out of the airport</li> <li>• Continued disturbance over time; public education program/noticing needed</li> <li>• Long-term health of trees remaining</li> <li>• Initial revegetation eligible for FAA funding; long-term removal and revegetation costs by city</li> </ul> <p><b>MINIMIZED TREE DISTURBANCE</b></p>	<ul style="list-style-type: none"> <li>• Remove all current AND future tree obstructions</li> <li>• Revegetate with a low-canopy forest</li> <li>• Maintains current use of airfield for flights into and out of the airport</li> <li>• Limited long-term vegetation management needed</li> <li>• Revegetation eligible for FAA funding</li> </ul> <p><b>GREATEST TREE DISTURBANCE</b></p>

# REMOVE AS NEEDED OPTION





# REMOVE AS NEEDED OPTION





# REMOVE AS NEEDED OPTION








# REMOVE AND REPLACE OPTION



**LEGEND**

-  Tree Removal
-  Revegetation
-  Seeding



# LOW CANOPY FOREST

Zone 1



Canadian Hemlock



Incense Cedar



Nootka Cypress



Western Hemlock



Paper Birch



River Birch



Red Alder



White Cottonwood

Zone 2



Deodar Cedar



Excelsa Western Red Cedar



Hogan Red Cedar



Leyland Cypress Gold Rider



Serbian Spruce



American Beech



Autumn Blaze Maple



Big Leaf Maple



Oregon Ash



Sawtooth Zelkova

Zone 3



Lawson Cypress 'Allumii'



Western White Pine



Shore Pine



Vanderwolf's Pyramid Pine



Bracken's Beauty Magnolia



Jacquemontii Birch



Raywood Ash



Red Sunset Maple



Pacific Dogwood



Eddie's White Wonder Dogwood



Scouler's Willow

Zone 4



Bruns Serbian Spruce



Golden Deodar Cedar



Arnold Sentinal Austrian Black Pine



Fat Albert Blue Spruce



Amur Maple



Vine Maple



Paperbark Maple



Columnar Sargent Cherry



Ann Magnolia



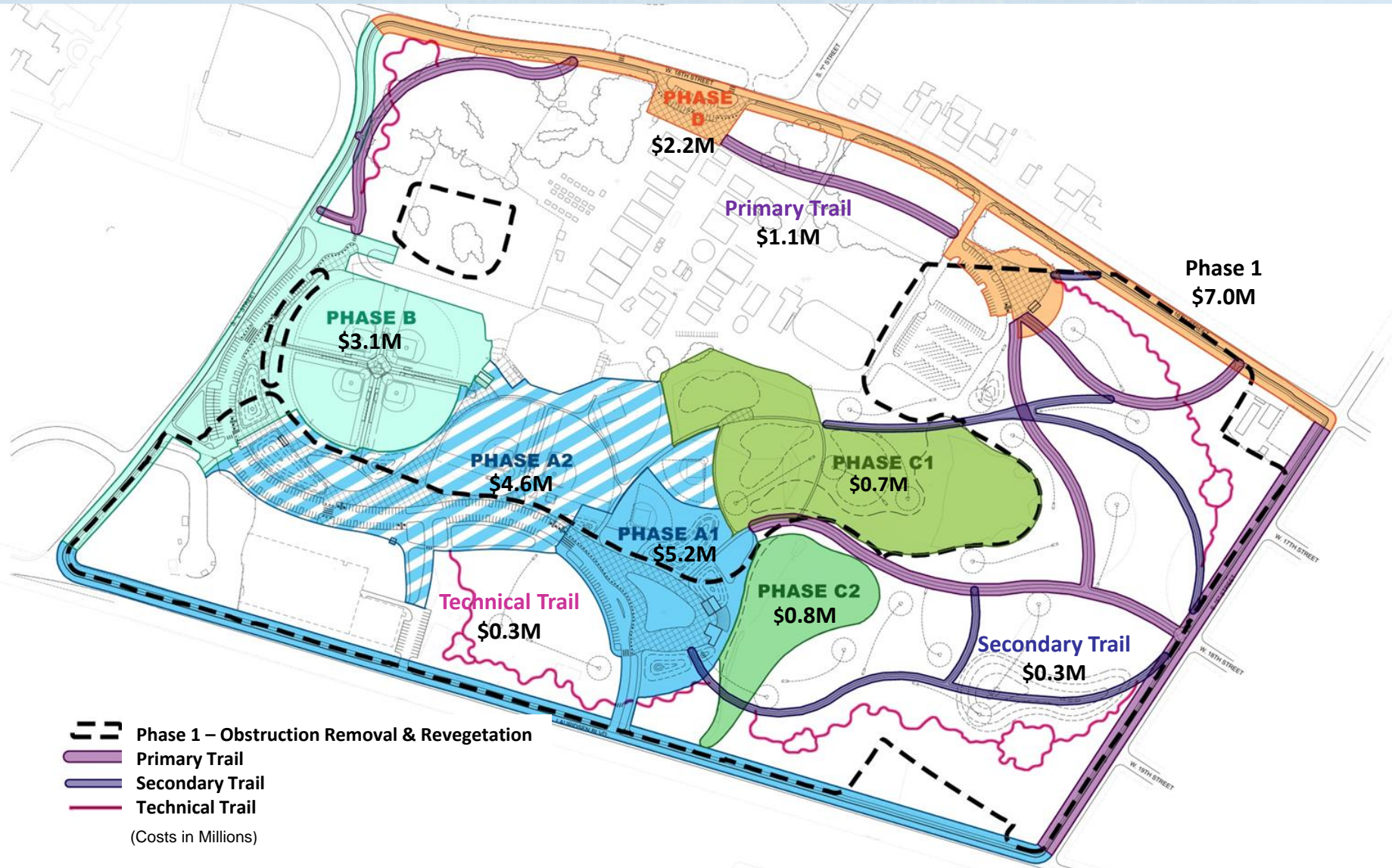
Hookers Willow



Cascara

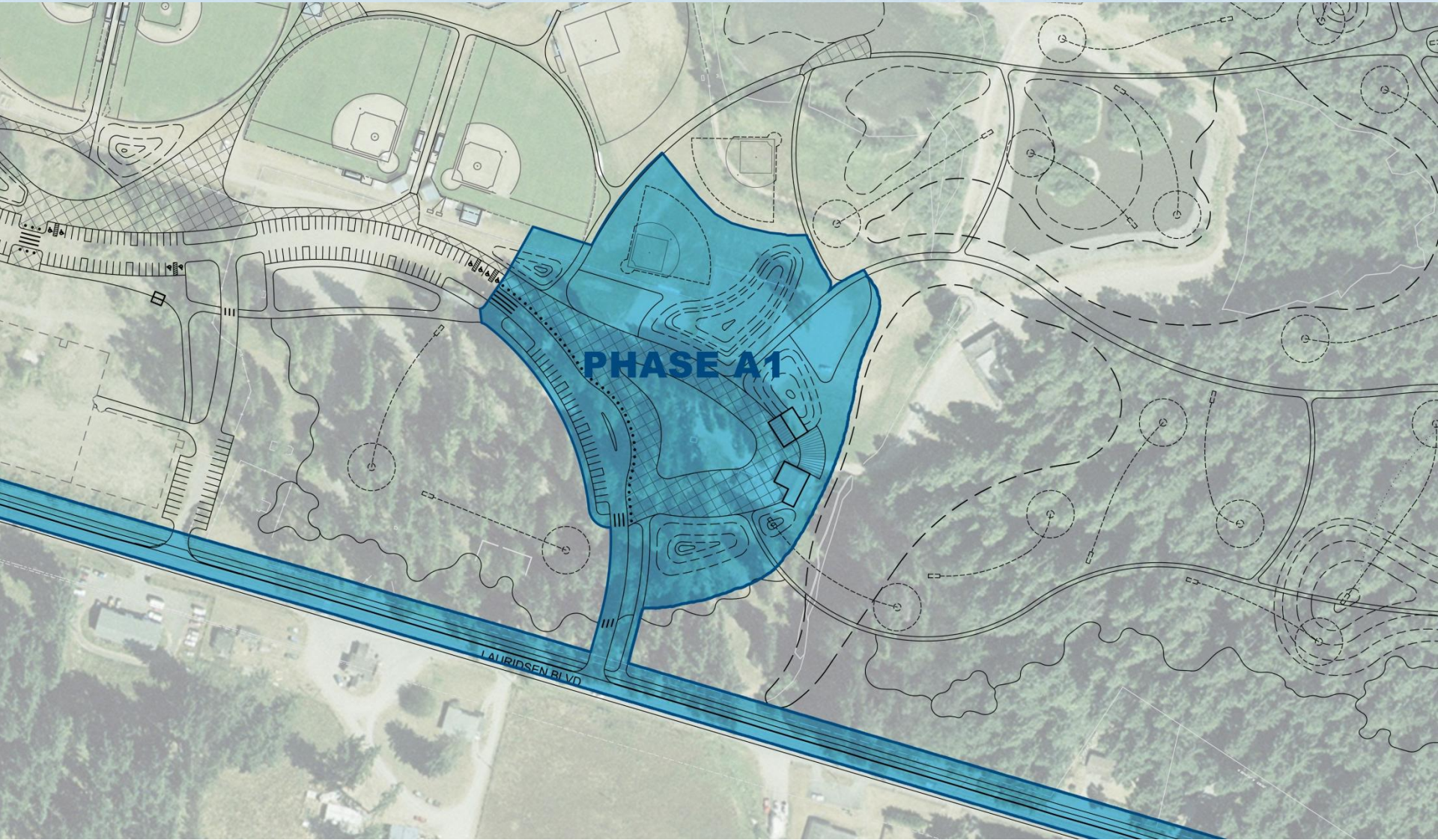


# PHASING DIAGRAM



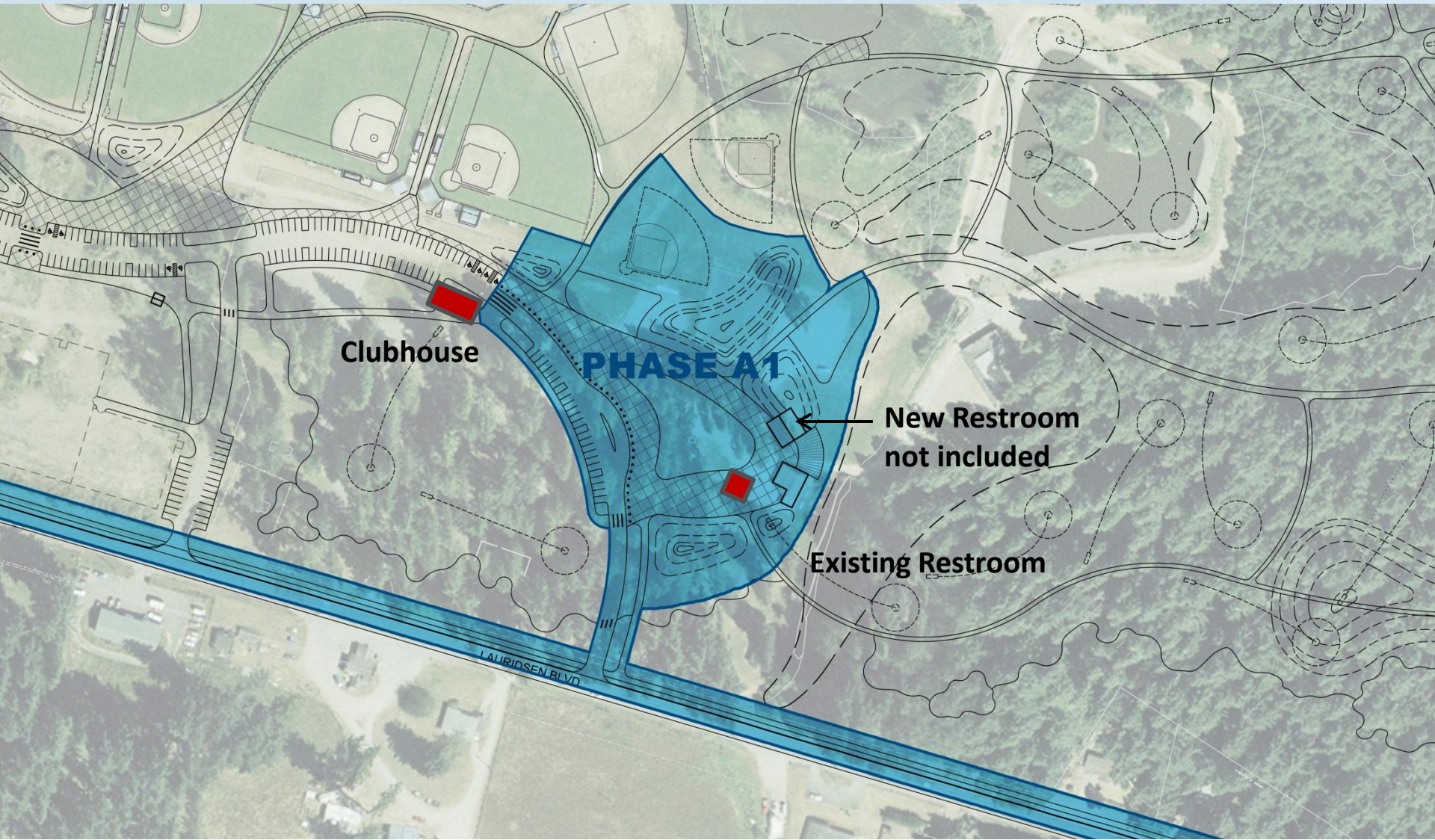


# PHASE – A1





# PHASE – A1





# FUNDING OPTIONS

- Washington Wildlife and Recreation Program (RCO)
- Land and Water Conservation Fund (RCO)
- Recreational Trails Program (RCO)
- Community Salmon Fund
- Salmon Recovery Fund
- Section 206 of the Water Resources Development Act of 1996
- King Conservation District grant funds
- Wild Places in Urban Spaces



# Public Comment



**PORT of PORT ANGELES**  
WASHINGTON STATE